

balliu

ENVIRONMENTAL AND SUSTAINABILITY IMPACT



We believe in design that respects, endures, and gives back.

RECYCLE

REDUCE

REUSE

RENOVE

100%

We use polypropylene which is a **reusable** and **100% recyclable** material.

Recycling it helps avoid the extraction of new natural resources and reduces CO² emissions.

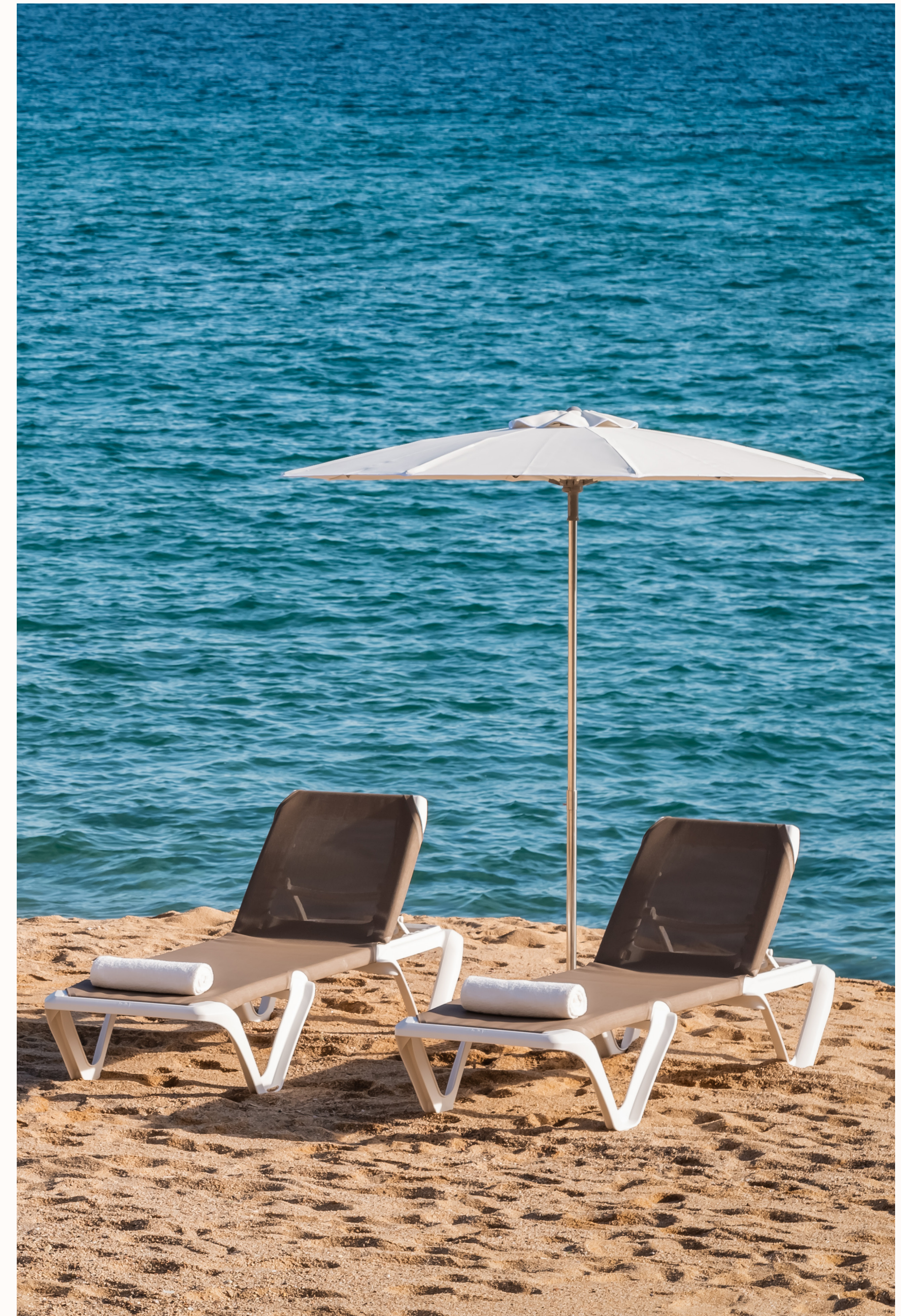


**RECYCLABLE
MATERIALS**

PLAN REMOVE

Our **Plan Remove** is part of an environmental programme which encompasses the entire life cycle of the product, from its design, development, use and subsequent withdrawal from the market.

The programme reinforces our commitment to a circular economy.



PLAN REMOVE



Waste reduction

The volume of waste is reduced by optimising the material to manufacture new items with a greater added value.

Environmental protection

It reduces the consumption of energy and fossil fuels which cause the greenhouse effect.

Improving the image

The appearance of the Mediterranean coast is recovered with a more modern and sustainable model.

Economic savings

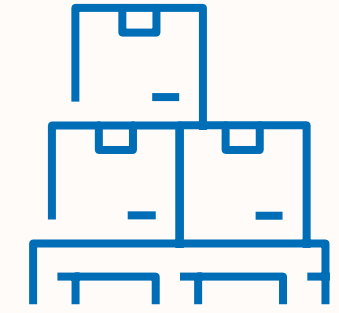
The value of the collected product is deducted from the purchase invoice for new sunloungers.

PLAN REMOVE



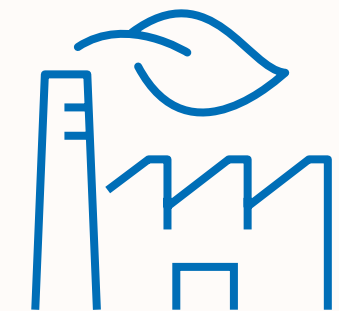
Collection

We collect obsolete polypropylene resin sun loungers.



Management

We separate the optimal material to be transformed.



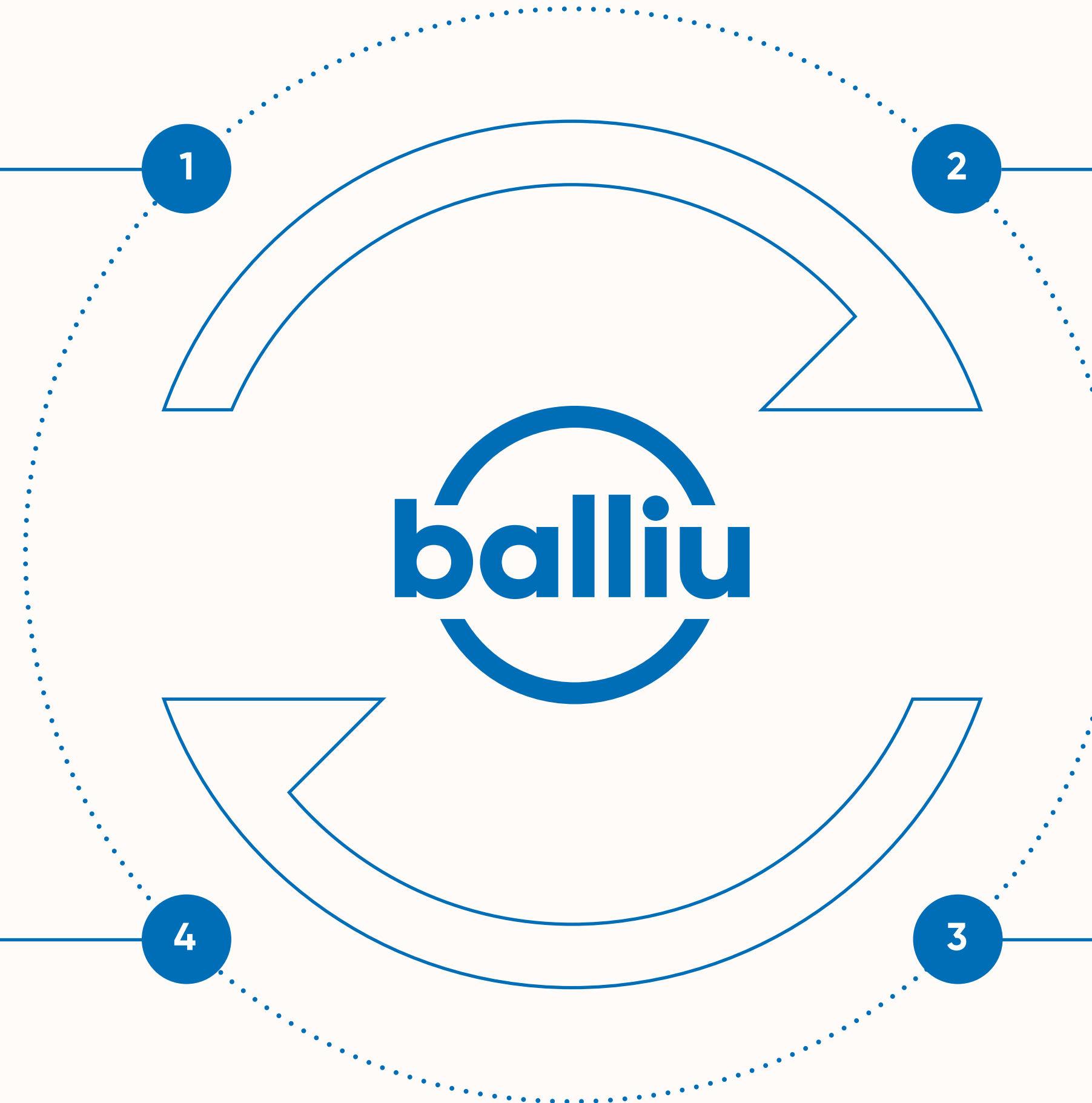
Recovery

We incorporate the recovered material into our manufacturing process.



Substitution

We replace obsolete sunloungers with new, more sustainable models.



Renove

Our **Plan Renove** initiative has had a positive impact on waste management. During 2024, we have **collected a total of 1360 units of products** which have been properly treated for recycling.

This programme not only allows us to reduce the amount of waste generated by our products, but also fosters the **circular economy** by promoting the reuse and recycling of materials.

PLAN RENOVE





2024 saw the **release of the 100% recycled version** of the catwalk. The raw material comes from our Plan Renove, i.e. the used product we collected.

We are also working on the 100% recycled version of other products, such as the iconic Selva chair.

**FINAL PRODUCT MADE
FROM RECYCLED MATERIAL**

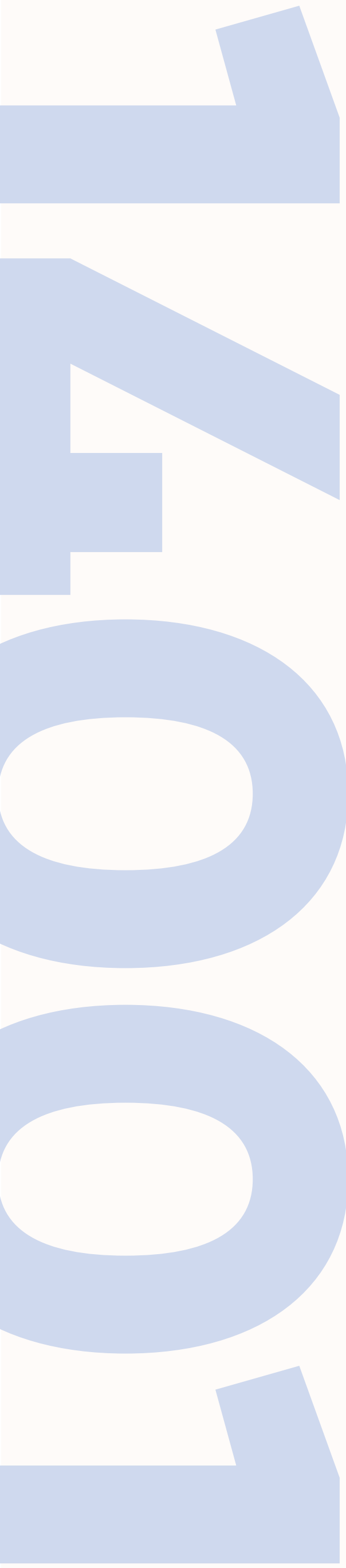


Our central facilities are powered by **up to 30% of totally clean energy**, thanks to the installation of solar panels.

With this measure, we are significantly reducing our carbon footprint.

INSTALLATION OF SOLAR PANELS

30%



CERTIFICADORA ACREDITADA POR **ENAC**

Balliu holds the **ISO 14001 Certification**, reflecting our commitment to protecting the environment, improving our environmental performance, and ensuring compliance with all relevant regulations.

CERTIFICATIONS





Balliu has been awarded the **PRS Green Label** for actively participating in the circular PRS network, highlighting our commitment to sustainability through the responsible use of resources and the reduction of environmental impact across our operations.

CERTIFICATIONS





Quality and Environmental Management Policy

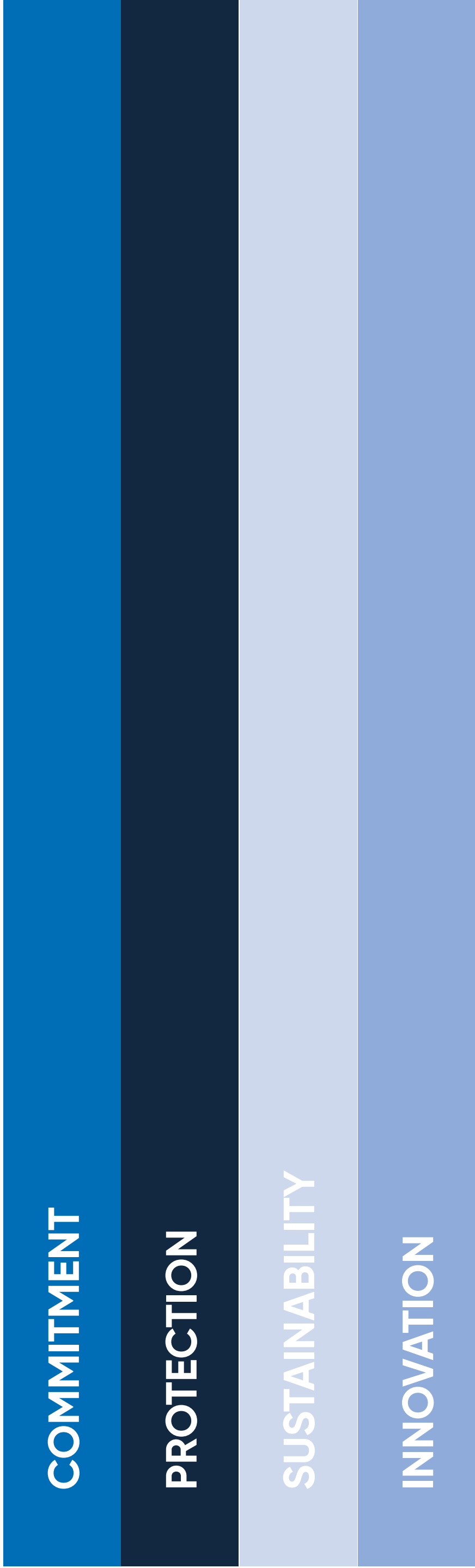
Balliu is fully committed to delivering high customer satisfaction, complying with legal and environmental requirements, and continuously improving its quality and environmental management system through responsible, efficient, and sustainable practices.

Balliu Export remains committed to **protecting the environment** and promoting **sustainable practices** throughout our operations.

Our initiatives to increase the use of sustainable materials and encourage recycling demonstrate our **commitment to environmental** responsibility.

We will continue to look for new ways to improve our environmental performance and work in partnership with our customers and stakeholders **to build a more sustainable future.**

CONCLUSIONS





Always sunny